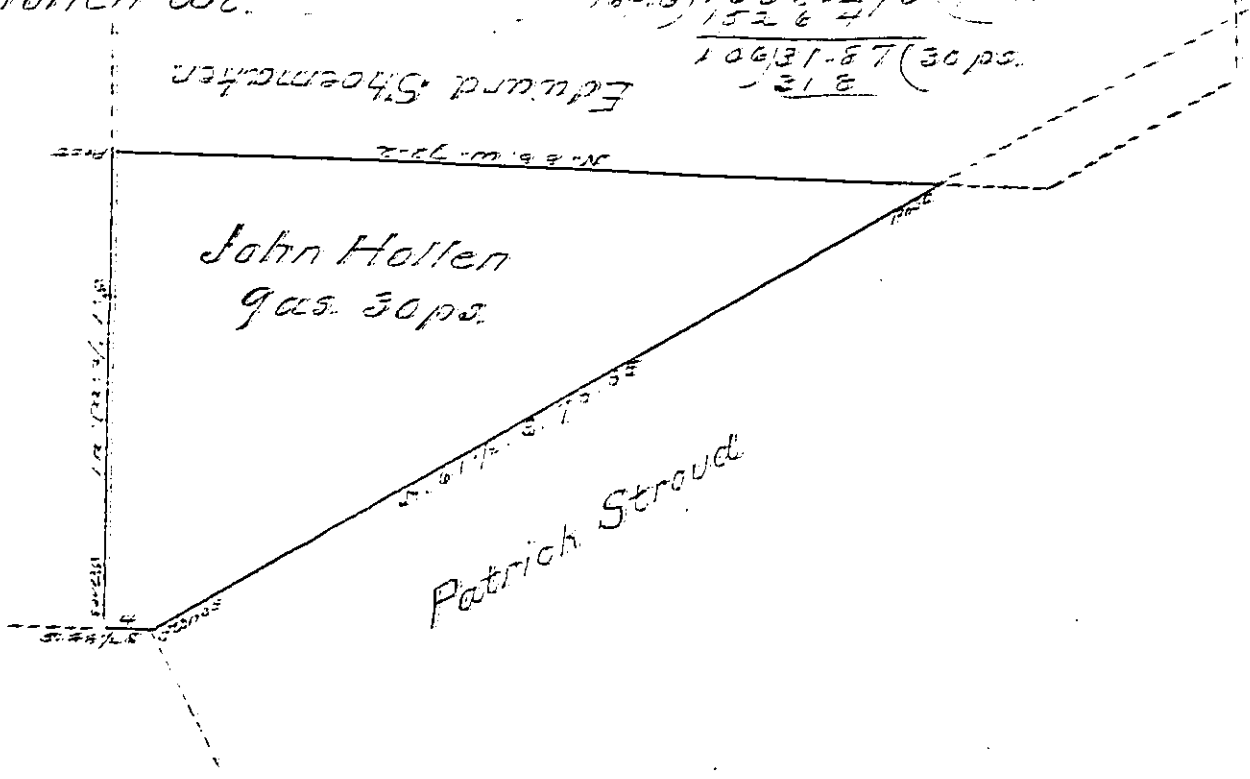


Beac	Dist.	N.	S.	E.	W.	D.M.D.	—	—
2884.5	4.25		0.1	44.0		4.56		0.40
1464.5	78.85	28.5		69.3		77.3	2976.05	
1188.0	72.2	2.6			72.2	77.4	156.10	
55 1/2	41.0		41.0		1.1	1.1		45.10
9 acres 30 ps. & all.		41.1	41.6	73.3	73.3		3162.05	45.50
							45.50	
							2) 3116.55	
							169.61	1553.275 (9 as.
							152.64	
							106) 1.87	30 ps.
							318	

John Hollen Wt.



Situate in White Township Blair County
 containing nine acres thirty perches and allowance
 six per cent for roads &c. Surveyed the _____ day of
 April A.D. 1865 in pursuance of a warrant granted
 to John Hollen dated 6th March 1865.

To James P. Barr Esquire }
 Surveyor General }
 Henry Scanlan
 Surveyor of Cambria

IN TESTIMONY that the above is a copy of the original remaining on file in
 the Department of Internal Affairs of Pennsylvania, made
 conformably to an Act of Assembly approved the 16th day of
 February, 1833, I have herewith set my Hand and caused
 the Seal of said Department to be affixed at Harrisburg,
 this fourth day of September 1900

James W. Latta
 Secretary of Internal Affairs.